

# Marine Scales

Fast, accurate, and robust



- Motion compensated marine weighing, labeling and packing
- Fast and accurate weighing at sea
- Robust, durable and hygienic design
- Water-resistant



# M2 Series

Marine scales specifically designed for the fishing and offshore industries.

## Introducing the M2: Built to Last.

Experience minimal maintenance and maximum durability with the motion-compensated M2, the highly accurate and robust scale designed to withstand the toughest wash-down environments. Equipped to handle a variety of weighing platforms and hoppers, this scale is expertly crafted to endure the most challenging conditions at sea. Featuring water-resistant properties and smooth, rounded edges, the M2 is easy to clean and maintain for maximum hygiene. Choose the M2 for a reliable and long-lasting weighing solution that won't let you down.



## Total connectivity.

With the M2, you have complete control. The M2 is easily capable of connecting to external devices, such as printers and labeling equipment, as well as network computer systems, through its USB, RS232, and Ethernet connection capabilities. This provides a comprehensive overview of weighing procedures, data, and equipment control. Packing operations are made faster and more efficient with the M2, one of the fastest scales available. Plus, you can connect the M2 to a label printer for easy labeling of catch products or boxes. The M2 can also interface with external software products like catch management and Excel for added versatility.

| Models                          | M2-S           | M2-M            | M2-L            | M2-XL           | M2-XXL          |
|---------------------------------|----------------|-----------------|-----------------|-----------------|-----------------|
| Platform outer dimension (mm)   | 250x300mm      | 300x400mm       | 400x500mm       | 450x600mm       | 800x600mm       |
| Platform outer dimension (Inch) | 9.84x11.81 in. | 11.81x15.75 in. | 15.75x19.69 in. | 17.72x23.62 in. | 31.50x23.62 in. |
| Weighing capacity (Accuracy)    |                |                 |                 |                 |                 |
| 6 kg ( 1 - 2 g)                 | X              |                 |                 |                 |                 |
| 15 kg ( 2 - 5 g)                | X              | X               | X               |                 |                 |
| 30 kg ( 5 - 10 g)               |                | X               | X               | X               |                 |
| 60 kg ( 10 - 20 g)              |                | X               | X               | X               | X               |
| 100 kg ( 20 - 50 g)             |                | X               | X               | X               | X               |
| Features and options            |                |                 |                 |                 |                 |
| Wall mount (included)           | X              | X               | X               | X               | X               |
| Column mount (optional)         | X              | X               | X               | X               | X               |
| Wifi (optional)                 | X              | X               | X               | X               | X               |
| Ethernet (optional)             | X              | X               | X               | X               | X               |
| Battery (optional)              | X              | X               | X               | X               | X               |
| USB (Optional)                  | X              | X               | X               | X               | X               |

# M3 Series

Accurate, adaptable, scientific marine scales.

## Build Materials and Quality.

R10 M3 Scientific Marine Scales are made out of high-quality stainless steel 316L, ensuring they are strong enough to withstand harsh marine environments. The materials used in construction make the scales waterproof and robust, allowing them to meet the strongest requirements for operating at sea.

## Adaptability.

The R10 M3 Scientific Marine Scales are designed for adaptability, allowing them to be customized to meet the unique needs of scientists and other professionals who require accurate weighing at sea. The scales are motion-compensated, meaning they automatically adjust for fluctuations in weight caused by waves and vibrations. They can also be connected to the R10 range of indicators, making built-in reporting, statistics, and printing available and customisable.

## Precision Without Compromise.

The R10 M3 series boasts unmatched precision, making it one of the most accurate scales on the market. With years of experience in the weighing and marine sectors, we have created the ideal scale for precise weighing at sea. Unlike other scales that default to lower resolutions, our scales prioritize accuracy by using advanced technology to detect and compensate for movement, ensuring precise readings even when a high accuracy is necessary. The result is a scale with almost no deviation from the displayed weight, providing reliable and consistent measurements.



Optional carrying case

| Models                          | M3            | M3 270x270      |
|---------------------------------|---------------|-----------------|
| Platform outer dimension (mm)   | 120x120mm     | 270x270mm       |
| Platform outer dimension (Inch) | 4.72x4.72 in. | 10.63x10.63 in. |
| Weighing capacity (Accuracy)    |               |                 |
| 300 g ( 0.1 - 0.2 g)            | X             |                 |
| 600 g ( 0.2 - 0.5 g)            | X             |                 |
| 1500 g ( 0.5 - 1 g)             | X             | X               |
| 3000 g ( 1 - 2 g)               | X             | X               |
| 6000 g ( 2 - 5 g)               | X             | X               |
| Features and options            |               |                 |
| Wifi (optional)                 | X             | X               |
| Ethernet (optional)             | X             | X               |
| Battery (optional)              | X             | X               |
| Serial interface (Optional)     | X             | X               |
| Windcover (Optional)            | X             |                 |
| Carrying case (Optional)        | X             | X               |

# Catch management



## R50 catch management

The R50 catch management solution is more than just a weighing tool; it enables you to grade, box, and label your catches for sale. Its integrated software creates catch reports with logging, streamlining operations for marine industry professionals. With strict requirements for traceability, efficiency, and profitability, the R50 catch management solution provides a cost-effective and easy-to-use solution.

## Identifying species and grading

You can identify fish species by selecting from a list or simple photo preset. The Ethernet connection built into the system allows for easy updates and switching between lists, enabling the use of effective short-lists.

## Innovative features

The printing labels in the R50 catch management solution are fed out of a sturdy stainless steel enclosure that is designed with internal heating to prevent moisture damage to the labels. Additionally, the enclosure's design ensures that labels can be easily removed after each print.

## Reliable catch reporting

The R50 catch management system automatically transfers all weighing data to a computer via the network and optionally sends it to a cloud system, ensuring the safety of your data. Even if the connection is lost, the system saves all weighing data, which is synchronised as soon as the connection is restored.





# Custom scales

## 4-cell platform scale

Introducing WPL's Custom 4-Cell Scales for Marine Applications - the ultimate weighing solution for marine industries. Our scales are specifically designed for use in hopper scales, fish processing lines at factory trawlers, and conveyor belts, delivering accurate and reliable weight measurements in the most demanding marine environments.

Our motion-compensated weighing systems are custom-built to meet the unique requirements of the marine industry, utilizing advanced marine scale technology. We offer full integration options for processing equipment, custom sizes, capacities, and accuracies.

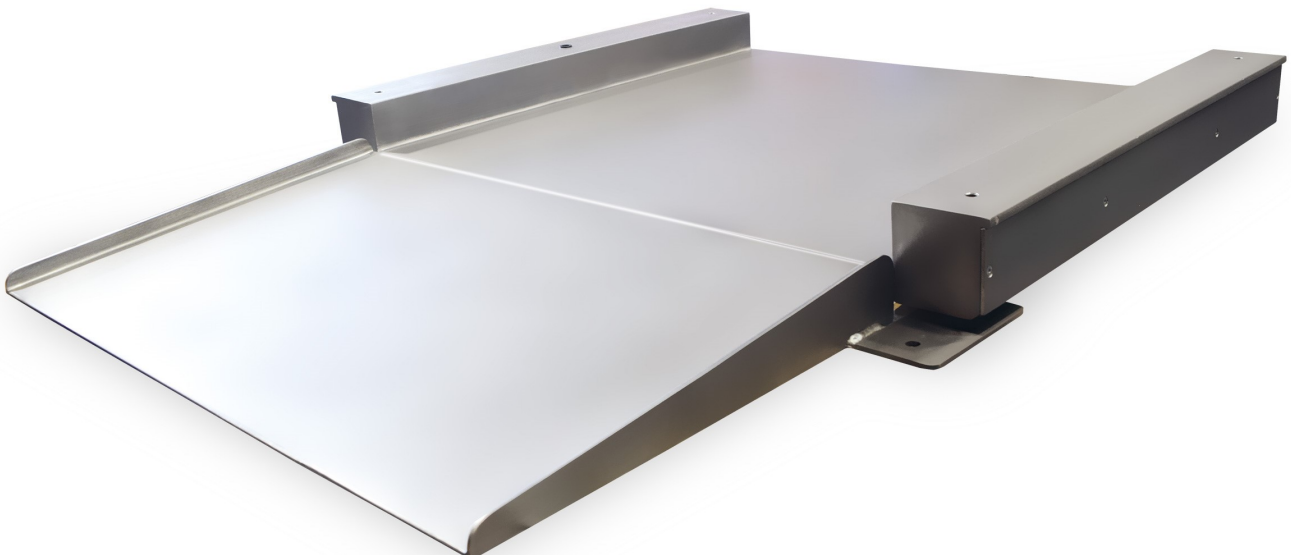
### Key Benefits:

- Motion compensation for tilt, motion, and gravity
- Accurate and fast weighing in rough sea conditions
- Proven reliability in tough environments
- Customized 4-Cell Scales for marine applications

At WPL, we specialize in developing and manufacturing a wide range of motion-compensating 4-Cell Scales for the marine industry. Our solutions enable customers to achieve superior precision in their weighing operations, saving them time and money while staying ahead of the competition.

### Features and Options:

- Automatic compensation for motion, tilt, and global gravity with no recalibration required
- High accuracy, fast weighing, and reliable systems made with stainless steel AISI 316
- Available options include RS232, Ethernet and WIFI communication, remote displays, relay boards, digital I/O signals, and label printers and report programs.



# Contact us

Please contact us for all your information requests:

**WPL**  
industries

WPL industries BV  
De iepenwei 14i - 4191 PD Geldermalsen (The Netherlands)  
T +31-(0)345-570558

[www.wpl-industries.com](http://www.wpl-industries.com) - [sales@wpl-industries.com](mailto:sales@wpl-industries.com)