

4 load cells scale

The most low-priced of its category



FEATURES:

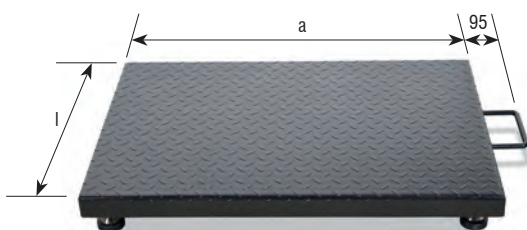
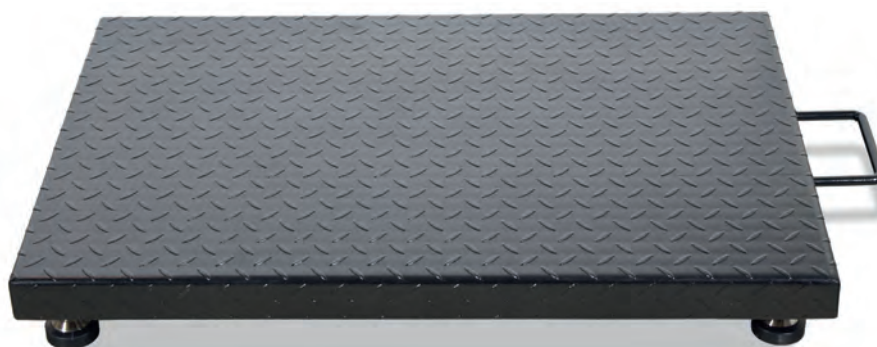
- Platform with 4 load cells with steel framework and diamond plate up to 5mm thick.
- Junction box in ABS, IP66.
- Lifting handle for installation and maintenance.
- It can be installed on ground.
- Adjustable feet in height.
- ABS indicator, model BR15.
- Backlight LCD display with six 30 mm height digits.
- Backlight of the display with 3 types: automatic, activated and deactivated.
- IP54 protection.
- Waterproof keyboard with 5 function keys and ON/OFF keys.
- Keyboard functions: Unit selector, zero, tare, accumulation and manual data transfer to PC or printer.
- Rechargeable internal battery 6V/4Ah.
- Operating temperature range: -10°C +40°C.
- Unique range, multi-range or multi-interval.
- Power supply with adaptor AC/DC 240Vac 50Hz.
- Unit 1 to choose: off, kg, t and g; Unit 2 to choose: off, lb, lboz; Unit 3 to choose: off, Taiwan Jin, CA or VISS.
- RS232 output (PC and print formats).
- Auto switch off (programmable: from 1 to 99 minutes).



Indicator BR15

FUNCTIONS:

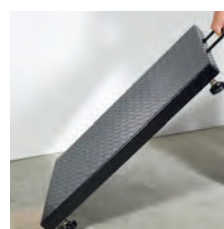
- Accumulation
- Totalization
- Piece counting
- Zero
- Hold 4 modes: deactivate, filter for animals, peak value, stable weight and stable weight with auto cancel in zero
- Check weighing (limits function) visual and alarm signals
- Three speeds of AD converter (high, medium and low)
- Programmable gravity
- Gross/Net
- Tare



Dimensions (mm)



Adjustable feet and Nickel-plated steel load cells IP66



Lifting handle for transport



Junction box in ABS

Code #	Capacity (kg)	Readout (g)	Dimensions (mm)	Packing dimensions (mm)	Packing weight (kg)
260624	600	200	900x600	730x1003x75+330x250x220	33+3,2
260623	600	200	1000x1000	1112x1116x75+330x250x220	50+3,2

Certifications	
ENAC	
Code #	
900003	
900003	

*See optional indicator BR15