

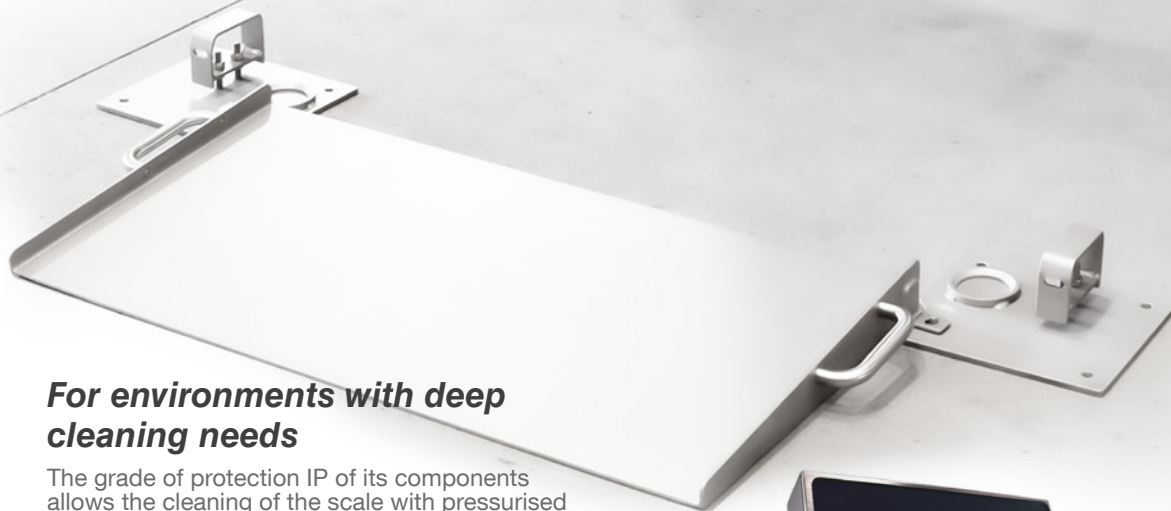
**GIROPES**  
WEIGHING SOLUTIONS

**WPC**

**RAISING  
PLATFORMS**

**EXTRA PLATE DESIGN AND  
HYGIENIC CONCEPT IN  
STAINLESS STEEL**

**M** 69k  
IP



***For environments with deep  
cleaning needs***

The grade of protection IP of its components allows the cleaning of the scale with pressurised water.

***Multifunctional and protection***

This indicator is suitable for all type of weighing in different industrial sectors with everyday weighing, piece control or piece counting and dosage.



PLATAFORMA  
**CE-M**

The platforms of the series WPC are approved in legal metrology CE-M. The platforms of the series WPC has been conceived to be used as standard extra flange scale. The wheelbarrows and the transpallet with its load access the weighing surface through an access ramp of frontal access.

# WPC

SCALE HIGH  
WATERTIGHTNESS



## THE SET WPC IS COMPOSED BY THREE PRINCIPAL ELEMENTS

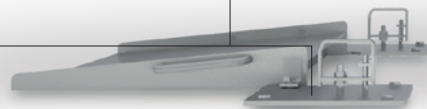
1. An extra flat weighing platform which includes the load cells and the junction box already installed in factory. The weighing surface is of doubled sheet.
2. The chassis is rooted on the ground and is where the weighing platform leans. This chassis, at the same time is the mechanism which allows the raising of the platform for the cleaning operations.
3. There is also an access ramp to the weighing surface of the platform. This access ramp can be fitted together with the chassis and is removable, this facilitates the cleaning of the own ramp and its leaning surface.

The structure of these three elements is done in stainless steel AISI304 to make sure a good resistance in wet environments and it can also be done in AISI316 for the hardest condition.



Removable ramp easy manipulation

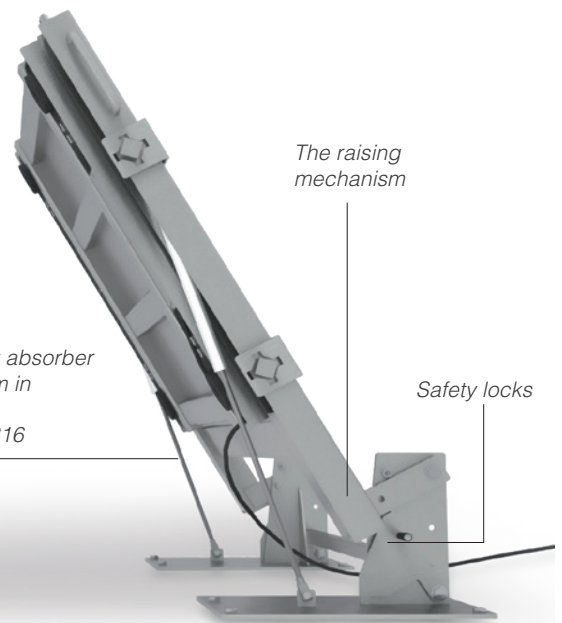
Anchor for fixing the ramp and the lifting mechanism



Gas shock absorber mechanism in stainless steel AISI316

The raising mechanism

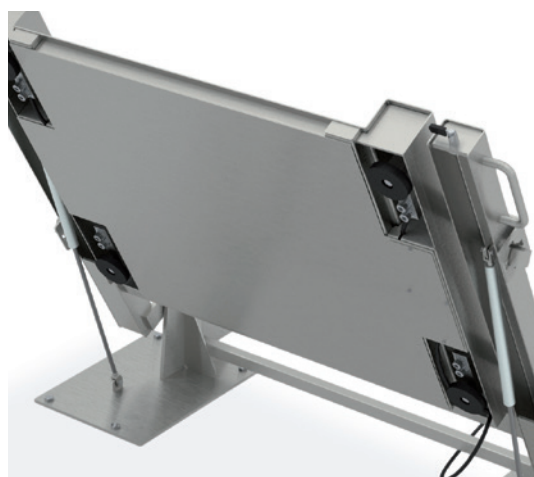
Safety locks



## THE RAISING MECHANISM OF THE PLATFORM WPC ALLOWS THAT TWO PEOPLE CAN RAISE THE PLATFORM EASILY

In this way both the surface of the ground- which normally remains hidden by the scale- and the inferior part of the structure, become accessible. In this way it is possible to clean both the ground and the scale. The grade of protection IP of its components allows the cleaning of the scale with water under pressure. If the conditions of work allow it, it is possible to leave the scale

raised to facilitate the drying of the set. To do so it contains a security bolt to prevent that the scale gets folded accidentally. Once you dry the scale and the working zone the scale can return to its working position putting it down between two people, accompanying it during its entire path.



**OPTIONALS - PROTECTION INFERIOR**  
Flat bottom surface to easy cleaning.

## TECHNICAL FEATURES WPC

<b>TYPE</b>	Extra flat raising platforms Bend steel plate profile structure
<b>MATERIAL</b>	Completely stainless steel AISI 304 Completely stainless steel AISI 316 *Available sandblasting, passivating and electropolishing
<b>INSTALLATION</b>	On ground with need of fixation
<b>DIMENSIONS</b>	From 800 x 800 to 2000 x 1500 mm
<b>CAPACITIES</b>	300 kg to 3000 kg
<b>HEIGHT</b>	50 mm, ramp to access included
<b>INSIDE ACCESS</b>	With a gas shock absorber raising mechanism. Without screws
<b>CABLE LENGTH</b>	5 m
<b>SUPPORT</b>	4 rubber base feet
<b>GAS SHOCK ABSORBERS</b>	In stainless steel AISI 316
<b>SCREWING</b>	Stainless steel
<b>LOAD CELLS</b>	In stainless steel IP68 or IP69k protection *Optional ATEX version for load
<b>INDICATORS</b>	GI400i IP65 GI400i IP68
<b>ACCESSORIES</b>	Column

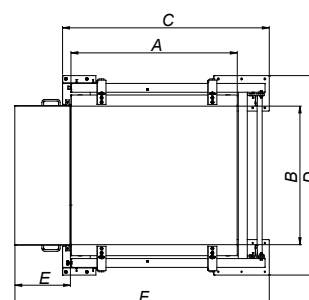
## EXTRA FLAT DESIGN



Junction box of 4 load cells, in plastic. Protection IP66.  
Junction box in stainless version ATEX (optional)

## DIMENSIONS

Dimensions of the weighing surface (mm)			Maximum dimensions of the set (mm)			Chassis and scale weight (kg)	Ramp weight (kg)
A	B	H*	C	D	F		
800	800	50	1165	1350	1590	100	20
1000	1000	50	1365	1550	1790	150	30
1250	1000	50	1615	1550	2040	170	30
1250	1250	50	1615	1800	2040	190	35
1500	1250	50	1865	1800	2290	210	35
1500	1500	50	1865	2050	2290	230	40



# WPC

SCALE HIGH  
WATERTIGHTNESS

## REFERENCE

# Code AISI304	# Code AISI316	Dimensions (mm)	Capacity (kg)	Readout (g)
170406	170408	800 x 800	300	100
170407	170409	800 x 800	600	200
170378	170381	1000 x 1000	300	100
170379	170382	1000 x 1000	600	200
170380	170383	1000 x 1000	1500	500
170384	170387	1250 x 1000	600	200
170385	170388	1250 x 1000	1500	500
170386	170389	1250 x 1000	3000	1000
170390	170393	1250 x 1250	600	200
170391	170394	1250 x 1250	1500	500
170392	170395	1250 x 1250	3000	1000
170396	170399	1500 x 1250	600	200
170397	170400	1500 x 1250	1500	500
170398	170401	1500 x 1250	3000	1000
170402	170404	1500 x 1500	1500	500
170403	170405	1500 x 1500	3000	1000

## STAINLESS STEEL FINISHES

SANDBLASTING	PASSIVATING	ELECTROPOLISHING
# Code	# Code	# Code
170776	170777	170778
170779	170780	170781
170782	170783	170784
170785	170786	170787
170788	170789	170790
170791	170792	170793
170794	170795	170796
170797	170798	170799
170800	170801	170802
170803	170804	170805
170806	170807	170808
170809	170810	170811
170812	170813	170814
170815	170816	170817
170818	170819	170820
170821	170822	170823

## APPROVAL & CALIBRATION

Description	€
CE APPROVALS: from 3 kg to 15000 kg	See page 10
ENAC CALIBRATIONS: from 3 kg to 6000 kg	See page 10

## REFERENCE ACCESSORIES

Description	Code #
Supplement for stainless steel ATEX load cells and ATEX junction box, for stainless steel platforms to 3000 kg	240088
Sealant and isolating gel to protect electronic circuits	240185
Additional metre of cable	240085



## Software PC Giscale Pro

Software to manage and control production lines from our GI400 SERIES indicators.

